



AVAILABLE SF: Suite 103 - 3,898 SF Data Center
Suite 300 - 2,630 SF

LEASE RATE: \$18.50 Modified Gross

BUILDING SIZE: 41,246 SF

YEAR BUILT: 2007

ZONING: Commercial/Office

CROSS STREETS: 309 North / Crackersport Rd.

PROPERTY OVERVIEW

1320 Hausman Road is located in South Whitehall Township with easy access to Routes 309 and 22, I78 and the PA Turnpike. This Class A, multi-tenant office building, with a park-like setting, has ample parking and gorgeous space with great fit-out options. Offering an ideal location and convenient lease terms for new and growing businesses and professional practices with one to one hundred employees.

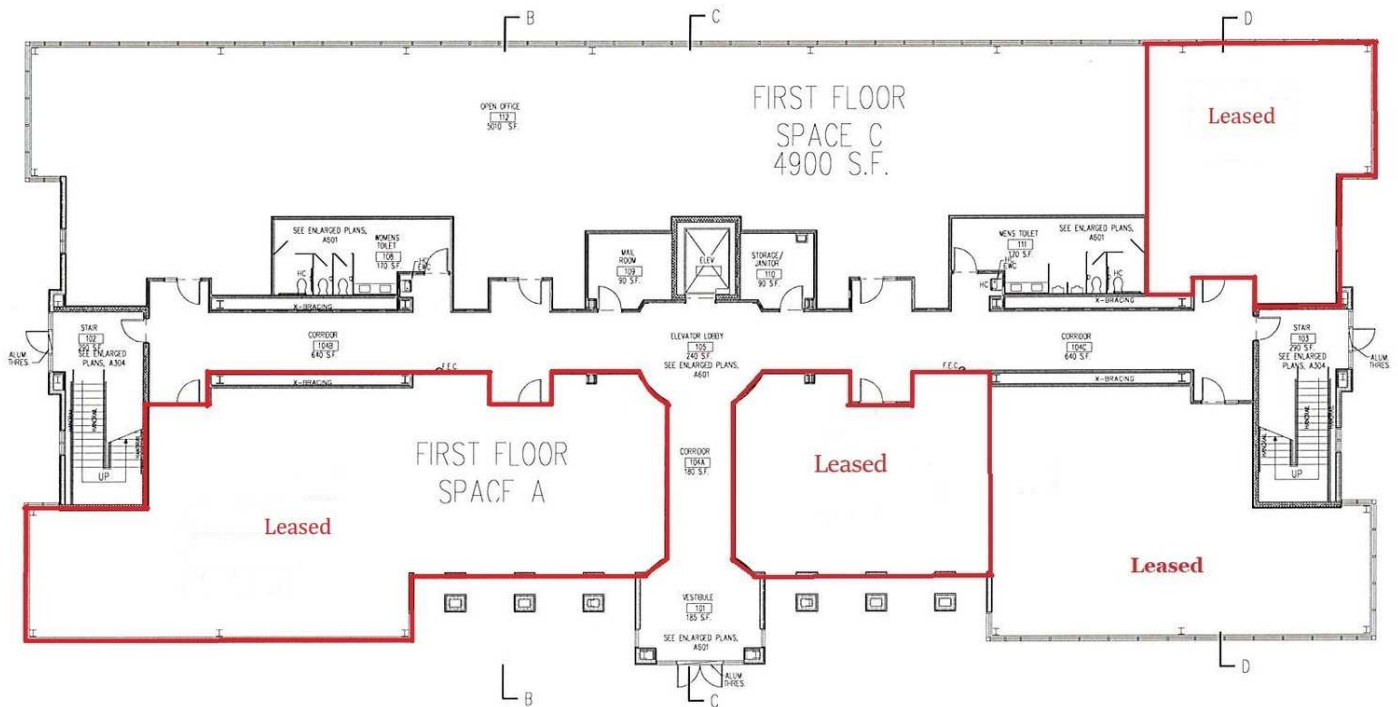
PROPERTY FEATURES

- 2,630 SF available on third floor - option to use existing furniture, new paint and carpet in the suite, move in ready
- 3,898 SF data center
- Floor to ceiling windows, security & access control
- Close to various area amenities

CINDY MCDONNELL FEINBERG
cfeinberg@feinbergrea.com
Cell: 610.360.9733
Direct: 610.709.6233

CASEY KELLER
ckeller@feinbergrea.com
Cell: 484.226.8081
Direct: 610.709.6232





SPACE	SPACE USE	LEASE TYPE	SIZE (SF)	AVAILABILITY
First Floor	Data room	PLUS ELECTRIC	3,898 SF	Negotiable

CINDY MCDONNELL FEINBERG
 cfeinberg@feinbergrea.com
 Cell: 610.360.9733
 Direct: 610.709.6233

CASEY KELLER
 ckeller@feinbergrea.com
 Cell: 484.226.8081
 Direct: 610.709.6232



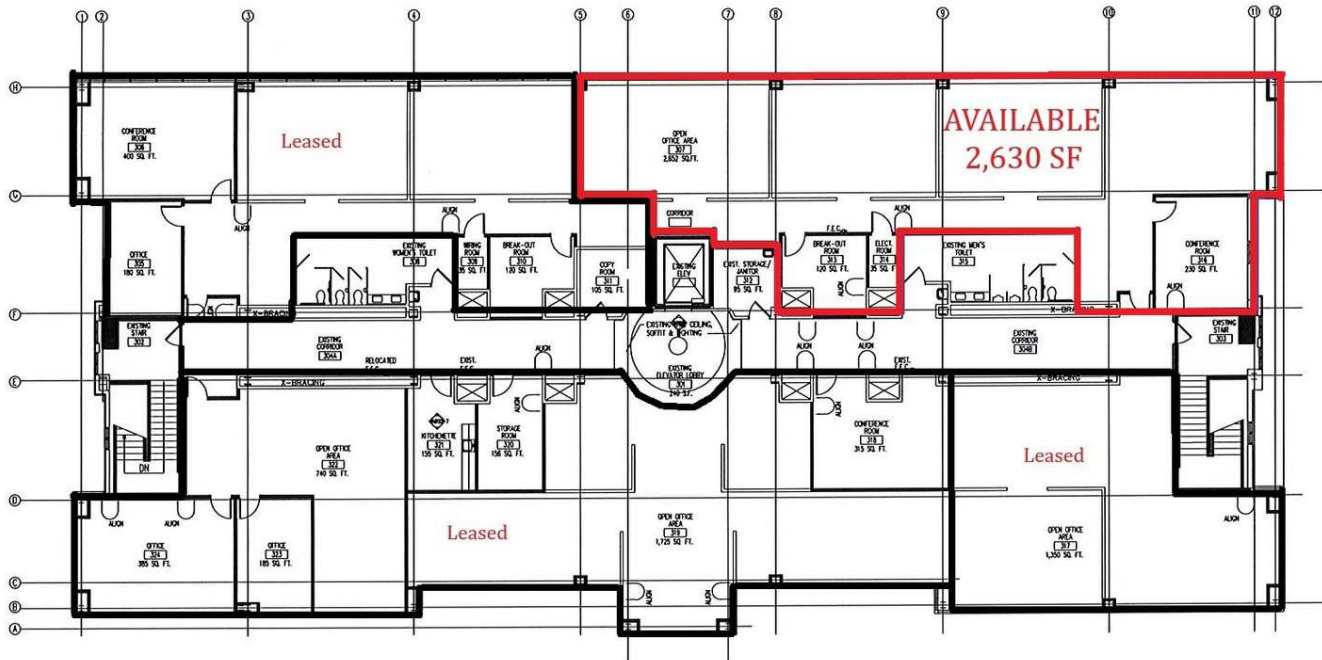


REAL ESTATE ADVISORS

Office Space for Lease

1320 Hausman Road, Allentown, PA 18104

Suite 300



SPACE	SPACE USE	LEASE RATE	LEASE TYPE	SIZE (SF)	AVAILABILITY
3rd Floor	Office Building	\$18.50	Modified Gross	2630 SF	VACANT

CINDY MCDONNELL FEINBERG
 cfeinberg@feinbergrea.com
 Cell: 610.360.9733
 Direct: 610.709.6233

CASEY KELLER
 ckeller@feinbergrea.com
 Cell: 484.226.8081
 Direct: 610.709.6232



Feinberg Real Estate Advisors, LLC

1390 Ridgeview Drive, Suite 301 • Allentown, PA 18104-9065 • 610.709.6233 • Fax: 610.398.4057 • www.feinbergrea.com

Suite 300

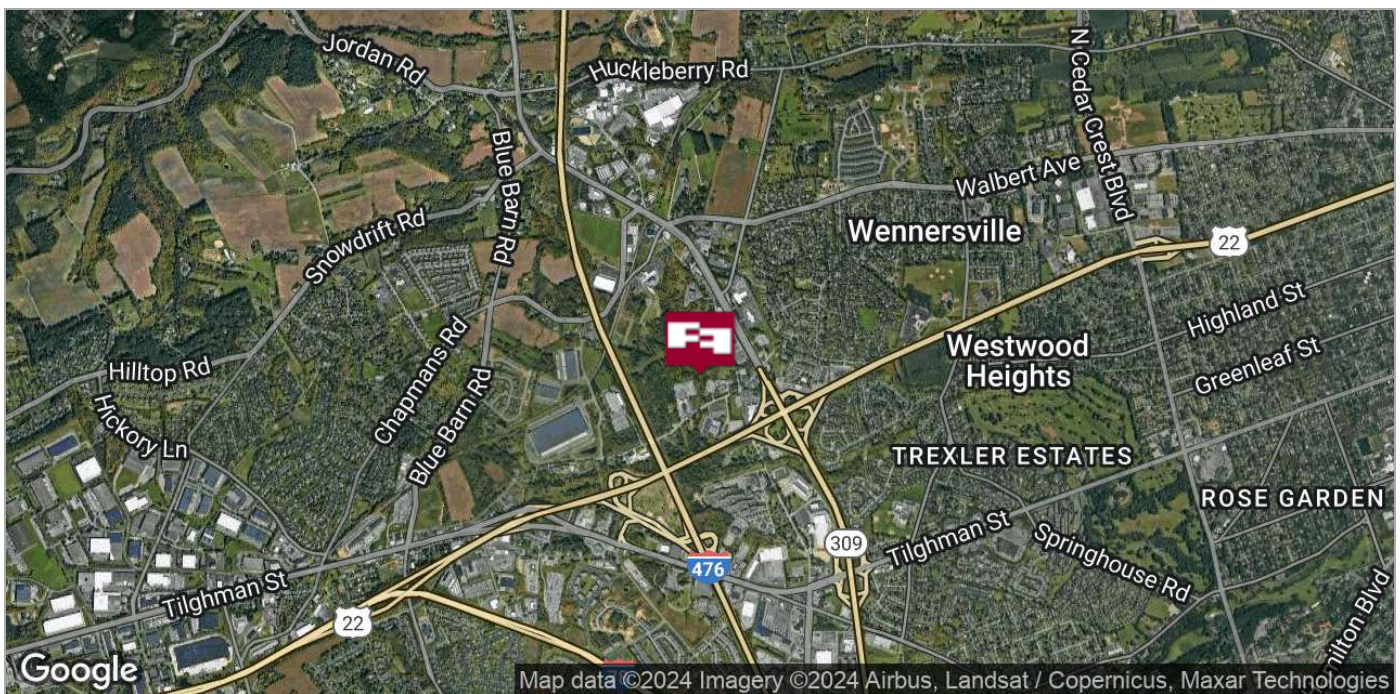
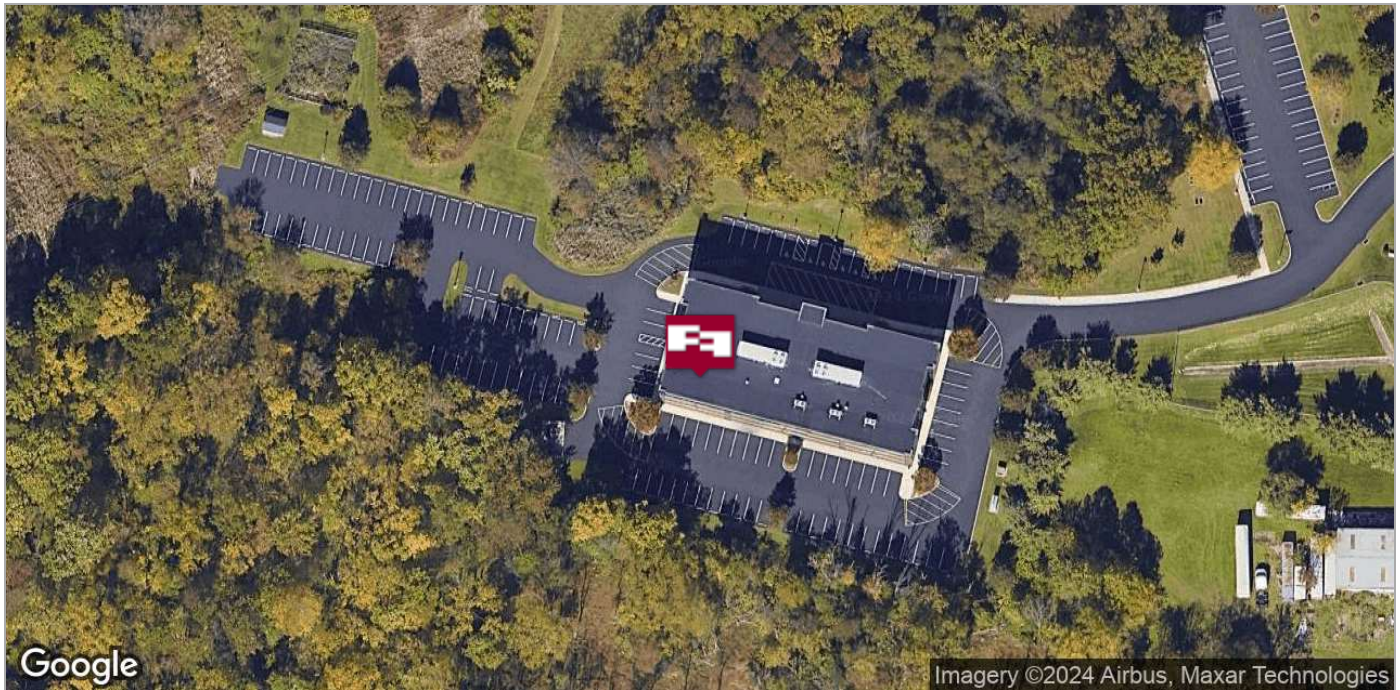


CINDY MCDONNELL FEINBERG
cfeinberg@feinbergrea.com
Cell: 610.360.9733
Direct: 610.709.6233

CASEY KELLER
ckeller@feinbergrea.com
Cell: 484.226.8081
Direct: 610.709.6232



Location Maps



CINDY MCDONNELL FEINBERG
cfeinberg@feinbergrea.com
Cell: 610.360.9733
Direct: 610.709.6233

CASEY KELLER
ckeller@feinbergrea.com
Cell: 484.226.8081
Direct: 610.709.6232

